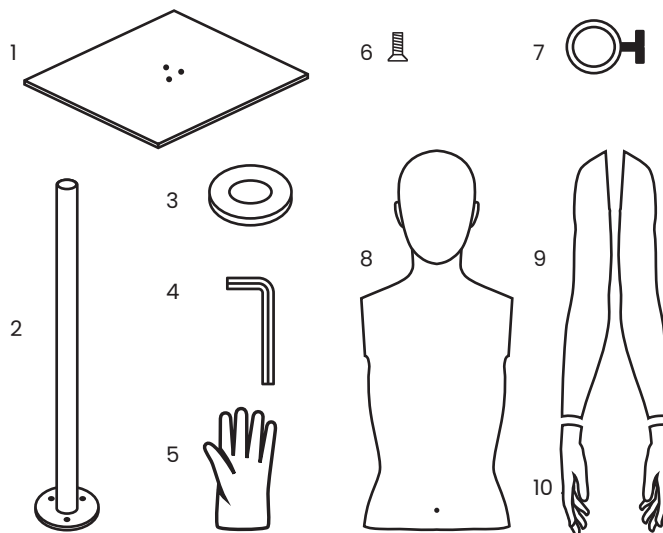


THANK YOU FOR CHOOSING OUR QUALITY PRODUCTS

In order to enjoy your mannequin for a long time, please pay attention to our care and handling recommendations.

WHAT'S IN THE BOX:

1. base plate with three screw holes
2. upright standard size 55 cm
3. assembly mask for upright
4. hex wrench (Allen key)
5. protection gloves
6. small screw (installed in the bottom of the upright)
7. positioning ring
8. upper body part
9. arms
10. pair of hands



ASSEMBLING INSTRUCTIONS:

STEP 1: Safety

Please take off all jewellery and put on gloves.

STEP 2: Opening the box

Use a box cutter / scissors to cut the straps, box and protective foam bags.

ATTENTION! Don't cut too deep to avoid damage on any of the product components. Take all the parts out of the box one by one and place them on a soft surface.

STEP 3: Install the base and upright

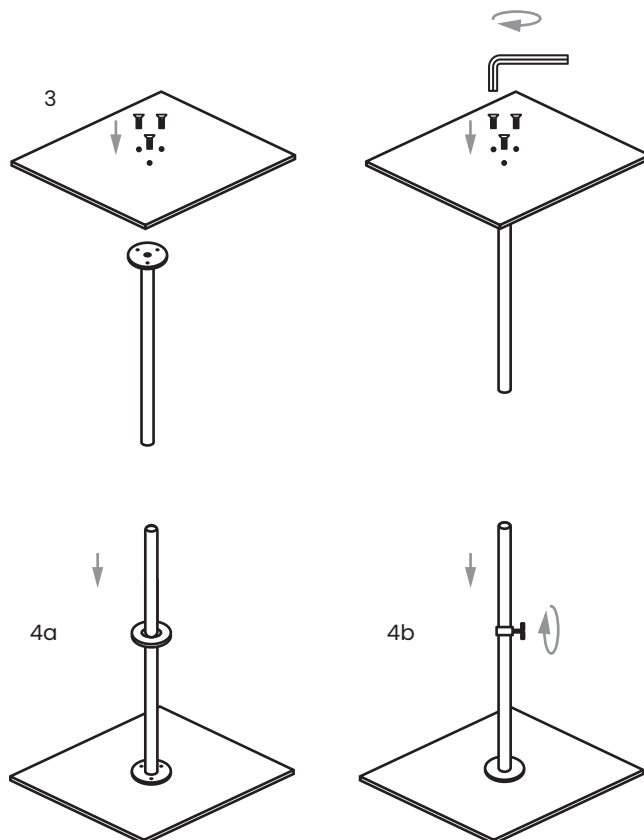
3: Use the three screws to attach the base plate to the upright and tighten.

Tip: Make sure to tighten the screws very well.

STEP 4: Install the assembly mask and positioning ring

4a: Place the assembly mask over the upright.

4b: Place the positioning ring over the upright, set at the desired height and tighten. This will act as a stopper for the bottom of the bust.



continues on the other side →

← starts on the other side

STEP 5: Install the torso

5a: Place the torso on the upright and slide it down into it's final position.

5b: Tighten the torso in place.

Tip: This is a good time to dress the torso.

STEP 6: Install arms and hands

6a: Connect the arms onto the torso. Once the arms are connected, they can be rotated front and back to find that perfect position.

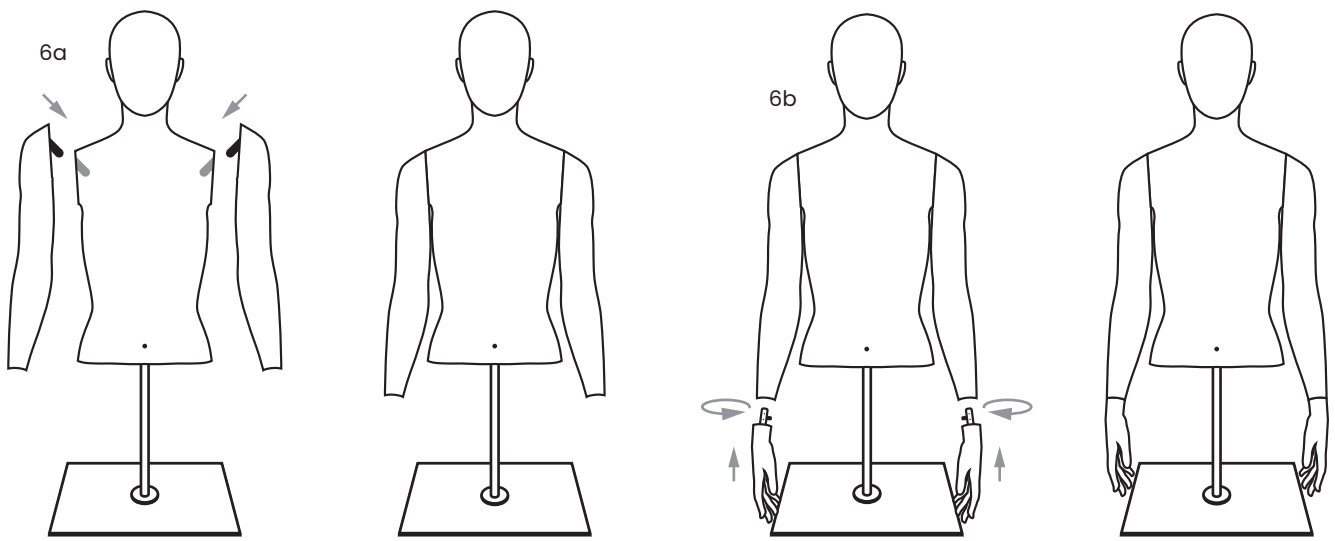
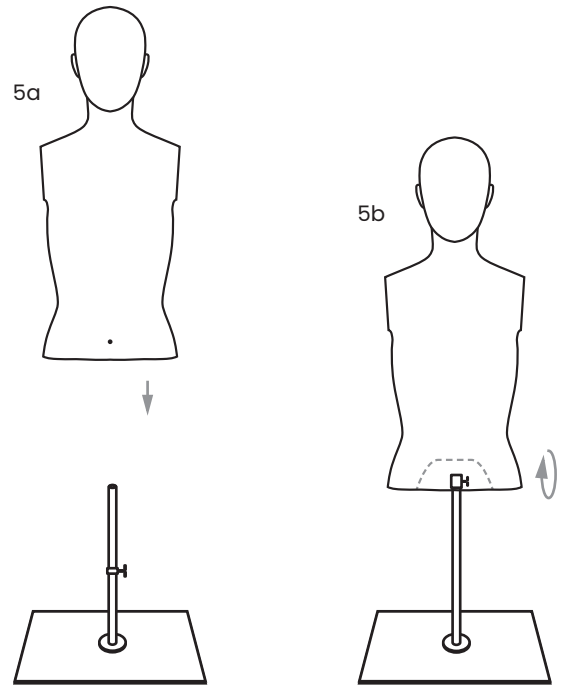
6b: Connect the hands by pushing them into the arms and rotate to their final position.

Tip: Only connect the hands once the mannequin is completely dressed.

STEP 7: Make sure everything is secure

Check the bust is in it's correct upright position then tighten all connections.

Tip: We recommend to keep the position ring in place to avoid scratches to the upright.



HANDLING & CARE GUIDELINES:

We recommend to (dis)assemble the bust on a soft and flat surface to avoid any damage.

Please always remove any jewellery before handling a mannequin to avoid scratches. We recommend using the provided gloves to avoid marks and stains.

While dressing, one often inserts the arms through the neck opening of the garment. Please ensure that the hook is opposite from the chest and rotate the arm only when the position of the hook is in front of the insert in the body.

This way you avoid damaging the paint on the mannequin with the hook.

In order to clean the mannequin, please use a slightly moistened cloth with detergent that has been diluted with water. Minor stains can be removed with an eraser.