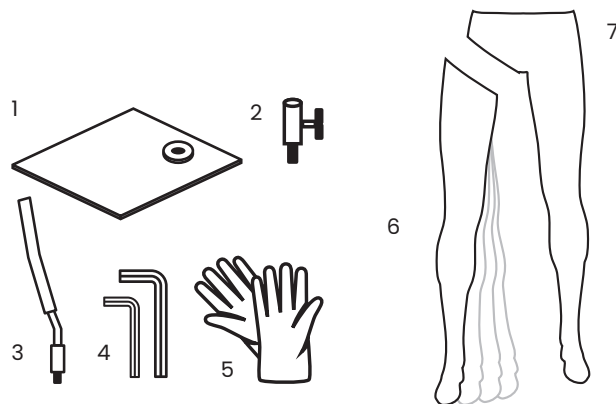


## THANK YOU FOR CHOOSING OUR QUALITY PRODUCTS

In order to enjoy your mannequin for a long time, please pay attention to our care and handling recommendations.

### WHAT'S IN THE BOX:

1. base plate
2. calf pin assembly
3. calf pin
4. hex keys
5. protection gloves
6. lower body part
7. leg with spring technology



### ASSEMBLING INSTRUCTIONS:

#### STEP 1: Safety

Please take off all jewellery and put on gloves.

#### STEP 2: Opening the box

Use a box cutter / scissors to cut the straps, box and protective foam bags.

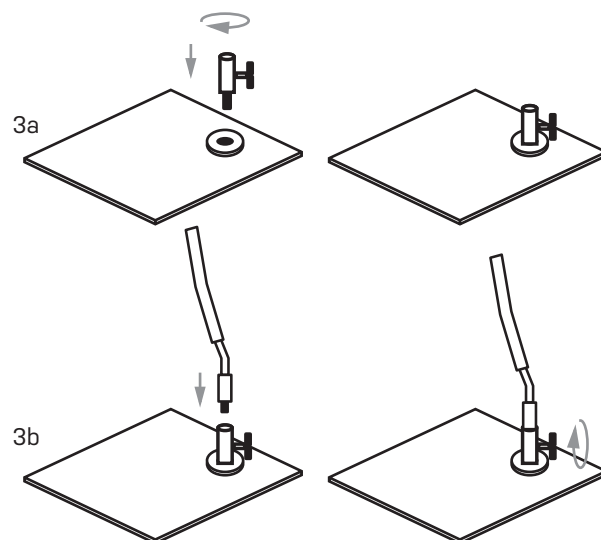
*ATTENTION! Don't cut too deep to avoid damage on any of the product components. Take all the parts out of the box one by one and place them on a soft surface.*

#### STEP 3: Install the base on the floor

3a: Screw the calf pin connector (1b) to the base plate (1a).

Tip: Make sure to tighten the screws very well.

3b: Place the calf pin (1c) in the connector (1b) and tighten.

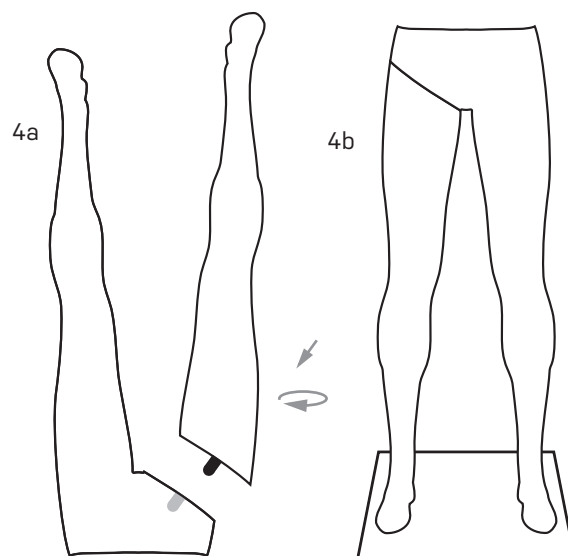


#### STEP 4: Install the leg

4a: Place the lower body part feet up on a soft surface, now you can easily connect the separate leg onto the hip part by rotating it a quarter turn until it clicks.

*Tip: This is the perfect position to dress trousers and put shoes on.*

4b: Turn the legs again and position the legs on the base. Ensure that the base is stable and on a flat surface to avoid problems. Once the legs are positioned onto the base, please tighten the hand screw of the calf pin connector to keep the legs in place onto the base.



### HANDLING & CARE GUIDELINES:

We recommend to (dis)assemble the product on a soft and flat surface to avoid any damage.

Please always remove any jewellery before handling a product to avoid scratches. We recommend using the provided gloves to avoid marks and stains.

In order to clean the product, please use a slightly moistened cloth with detergent that has been diluted with water. Minor stains can be removed with an eraser.