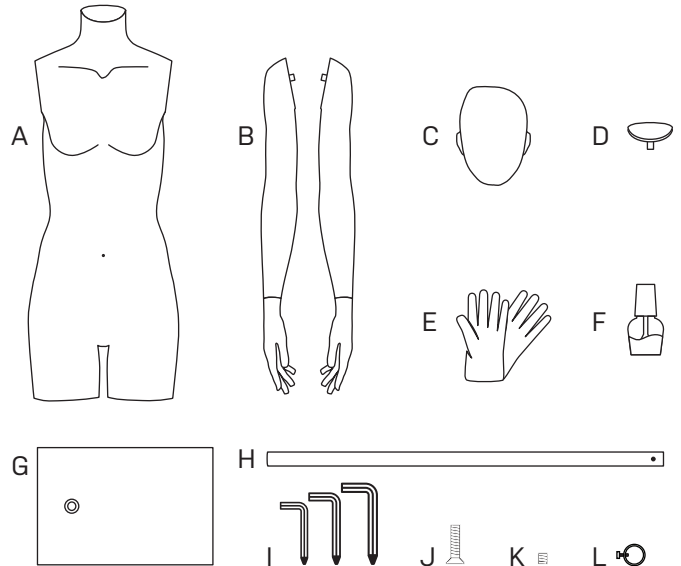


THANK YOU FOR CHOOSING OUR QUALITY PRODUCTS

This display mannequin is responsibly produced using Bio Resin composed of sustainable Susterra®, a certified bio-based material developed by DuPont Tate & Lyle Bioproducts and supported by natural fibres. In order to enjoy your new product for a long time, please pay attention to our care and handling recommendations.

WHAT'S IN THE BOX:

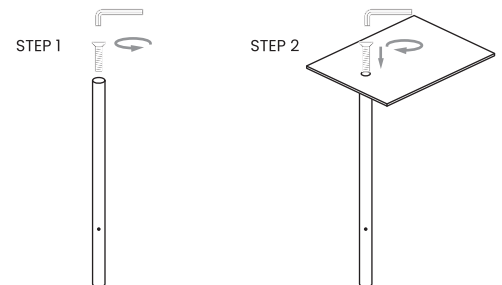
- A. Torso
- B. Arms
- C. Head
- D. Neck cap
- E. Gloves
- F. Touch-up paint
- G. Base
- H. Tube
- I. Small, Medium and Big Allen keys
- J. 1 X main screw (already inside tube)
- K. 2 X fixation screws (already inside base)
- L. ring support for bust stand



ASSEMBLING INSTRUCTIONS:

STEP 1: Removing the main screw

By using the big Allen key provided, remove the main screw (J) from the tube (H).

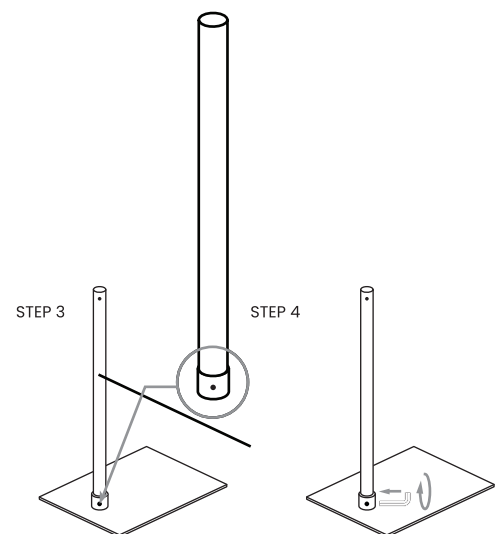


STEP 2: Mounting the tube to the base

Mount the tube to the base using the same screw (J) and tighten it with the big Allen key.

STEP 3: Locating fixation mounts

With the tube fixed to the base, place the base on the floor and locate the two small openings on both sides of the fixture. The fixation screws (K) are already inside.



STEP 4: Securing the base

By using the small Allen key provided, tighten the two fixation screws (K) to guarantee the stability of the stand.

continues on the other side →

← begins on the other side

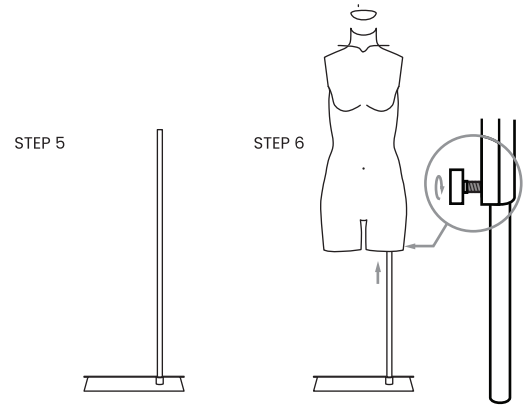
STEP 5: Connecting the bust to the stand

Once the stand is completely assembled and secured, place it on a flat surface and begin assembly of the bust.

STEP 6: Securing the bust in its final position

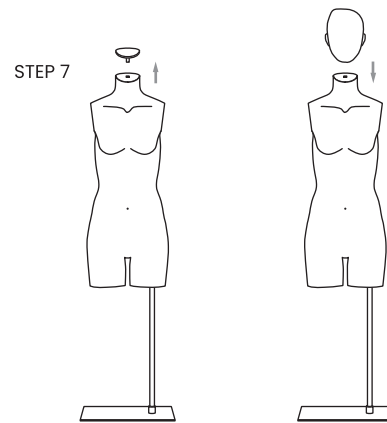
Place the support ring (L) over the upright, adjust it to the desired height and tighten. To secure the bust in its final position, please tighten the butterfly screw in the port at bottom of bust.

NOTE! Long torso's only have an off-centre fixation port while the short busts have a centred fixation port.



STEP 7: Attaching the head

If desired, the head (C) can be installed by simply lifting the neck cap (D) out and inserting the head.

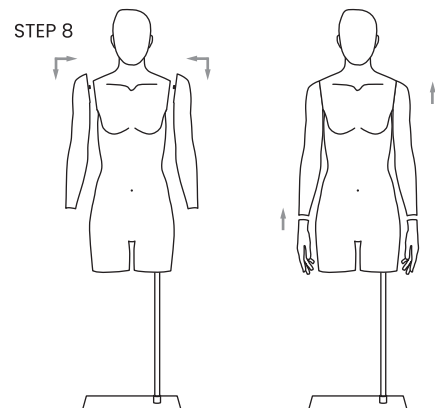


STEP 8: Attaching the arms

Connect the arms (B) onto the torso. Once the arms are connected, they can be rotated front and back to find that perfect position.

Tip: It is easier to connect the hands after the bust is completely dressed.

While dressing, one often inserts the arms through the neck opening of the garment. Please ensure that the ball-fitting is opposite from the chest and rotate the arm only when the position of the ball is in front of the insert in the body. This way you avoid damaging the paint on the mannequin.



HANDLING & CARE GUIDELINES:

We recommend you to (dis)assemble the mannequin on a soft and flat surface to avoid any damage.

Please always remove any jewellery before handling a mannequin to avoid scratches. We advise using the provided gloves to avoid marks and stains.

While dressing, one often inserts the arms through the neck opening of the garment. Please ensure that the ball-fitting is opposite from the chest and rotate the arm only when the position of the ball is in front of the insert in the body. This way you avoid damaging the paint on the bust.

In order to clean the bust, please use a slightly moistened cloth with detergent that has been diluted with water. Minor stains can be removed with an eraser.

To repair minor paint damages or scratches, a touch-up paint bottle is included. Firstly sand gently the damaged area with fine sandpaper. Using a long stick, stir the paint at the bottom, then shake well before use. After repairing the damaged area, let the paint dry in a warm area.