

THANK YOU FOR CHOOSING OUR QUALITY PRODUCTS

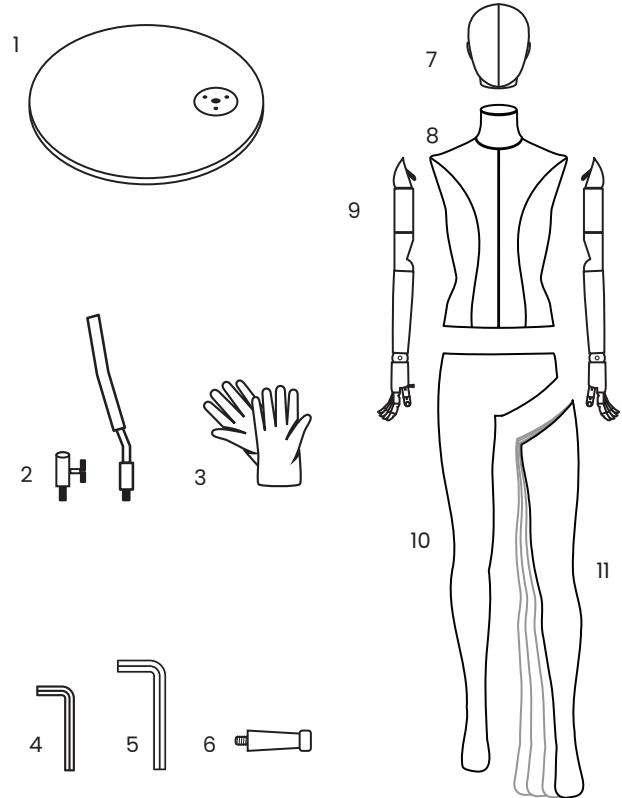
In order to enjoy your mannequin for a long time, please pay attention to our care and handling recommendations.

WHAT'S IN THE BOX:

1. base
2. calf pin and connector
3. gloves
4. small hex key (offered if over time the base connector screws would come loose and need to be tightened again)
5. big hex key (offered to set the tension of waist and leg fitting if required over time)
6. hand accessory pin
7. head
8. upper body part
9. arms
10. lower body part
11. leg (if both legs are not connected)*

*spring leg: Display mannequins with wider leg position are equipped with a spring leg fitting. When putting on trousers, you can simply pull the legs closer without needing to disassemble the separate leg.

Tip: We highly recommend you to mark each part of the mannequin, base and connectors in a non-visible area like the connection ports of the torso, legs, arms and hands to keep all the components together in case of future disassembly or reassembly.



ASSEMBLING INSTRUCTIONS:

STEP 1: Safety

Please take off all jewellery and put on gloves.

STEP 2: Opening the box

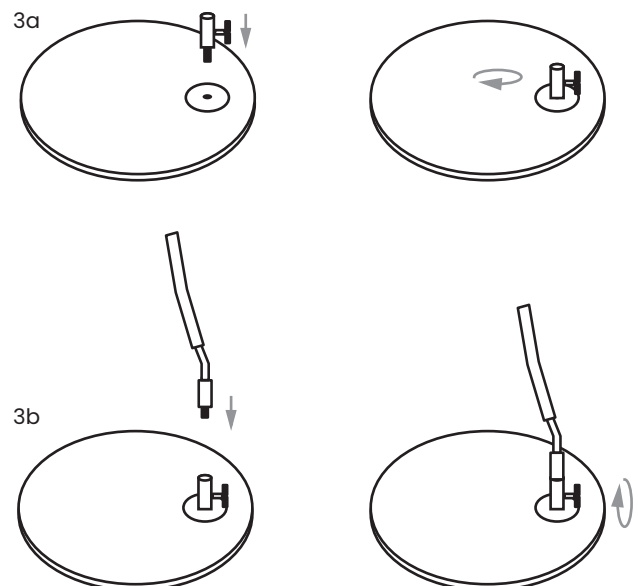
Use a box cutter / scissors to cut the straps, box and protective foam bags.

ATTENTION! Don't cut too deep to avoid damage on any of the product components. Take all the parts out of the box one by one and place them on a soft surface.

STEP 3: Install the base on the floor

3a Screw the calf pin connector clockwise into the base and tighten well.

3b Please install the calf pin in the connector with top of calf pin in the centre of the base. Place the calf pin in the connector and tighten.



continues on the other side →

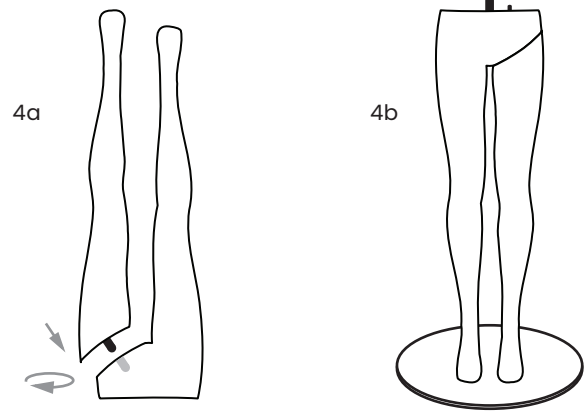
← starts on the other side

STEP 4: Install the leg

4a Place the lower body part feet up on a soft surface, now you can easily connect the separate leg onto the hip part by rotating it a quarter turn.

Tip: This is the perfect position to dress trousers and put shoes on.

4b Position the legs on the base and make sure to tighten the wing screw in the back of leg. Ensure that the base is stable and on a flat surface to avoid any stability problems.



STEP 5: Install the torso

5a: Place the torso on the hip part, slightly twisted and rotate the torso into it's final position.

Tip: This is a good time to dress the torso.

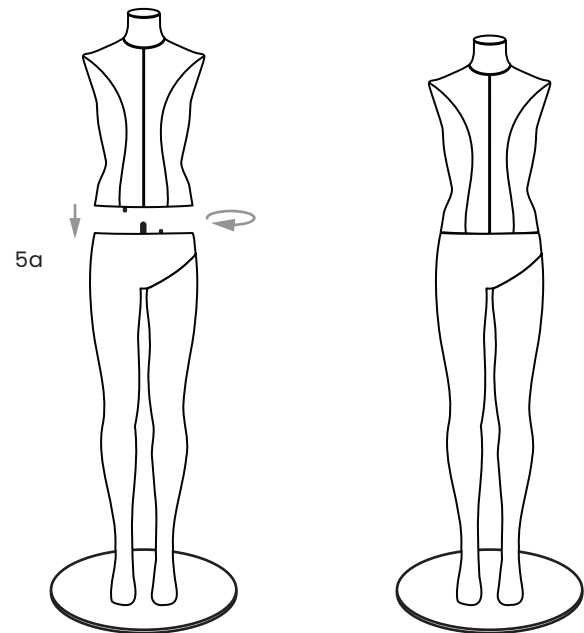
STEP 6: Install arms and head

6a Connect the arms onto the torso with our user friendly hook system. Once the arms are connected, they can be rotated front and back to find that perfect position.

Tip: If you wish to display accessories such as handbags, you can connect the accessories pin. The accessory pin screws in the palm of the hand.

6b To attach the head, simply screw it in.

Tip: Only connect the head once the mannequin is completely dressed.



HANDLING & CARE GUIDELINES:

We recommend to (dis)assemble the mannequin on a soft and flat surface to avoid any damage.

Please always remove any jewellery before handling a mannequin to avoid scratches. We recommend using the provided gloves to avoid marks and stains.

While dressing, one often inserts the arms through the neck opening of the garment. Please ensure that the hook is opposite from the chest and rotate the arm only when the position of the hook is in front of the insert in the body. This way you avoid damaging the mannequin with the hook.

In order to clean the mannequin, please use a slightly moistened cloth with detergent that has been diluted with water. Minor stains can be removed with an eraser.

