

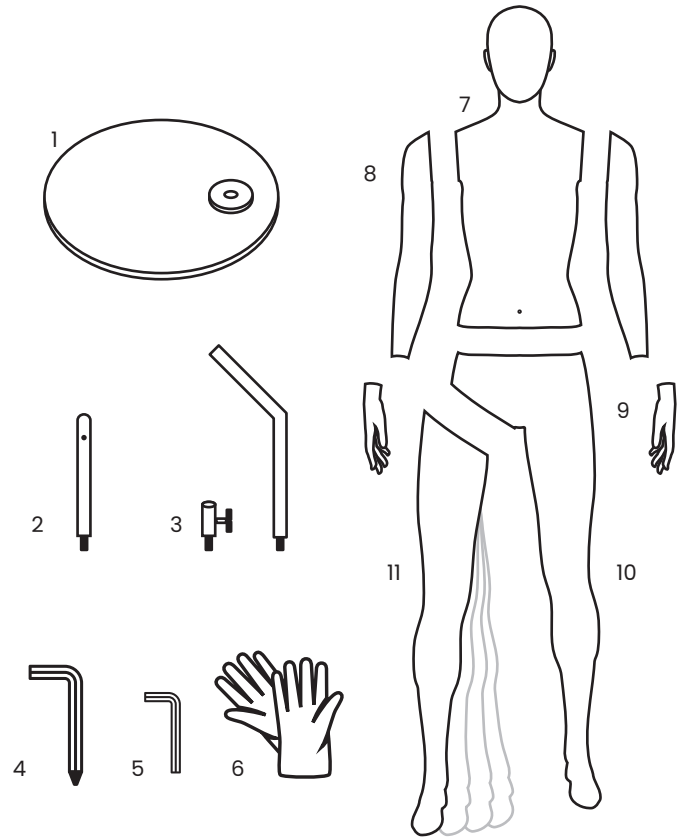
THANK YOU FOR CHOOSING OUR QUALITY PRODUCTS

In order to enjoy your mannequin for a long time, please pay attention to our care and handling recommendations.

This display mannequin is responsibly produced using durable ABS plastic and premium fittings to ensure a long life span. Together we contribute to a greener future.

WHAT'S IN THE BOX:

1. a. base plate
b. foot pin
c. calf pin connector
d. calf pin
2. hand accessory pin*
3. small hexkey (offered if over time the base connector screws would come loose and need to be tightened again)
4. big hexkey (offered to set the tension of waist and leg fitting if required over time)
5. gloves
6. upper body part
7. arms
8. hands
9. lower body part
10. leg (if both legs are not connected)**



*The hex key is offered in order to adjust the tension of the waist and leg fitting if required. If you like to loosen the tension, please move the hex key anticlockwise. We recommend you to start with a quarter turn per try. The screwdriver allows to adjust tension of arm fitting and tighten screws of the base connector over time.

**Display mannequins with wider leg position are equipped with a spring leg fitting. When putting on trousers, you can simply pull the legs closer without needing to disassemble the separate leg.

ASSEMBLING INSTRUCTIONS:

STEP 1: Safety

Please take off all jewellery and put on gloves.

STEP 2: Opening the box

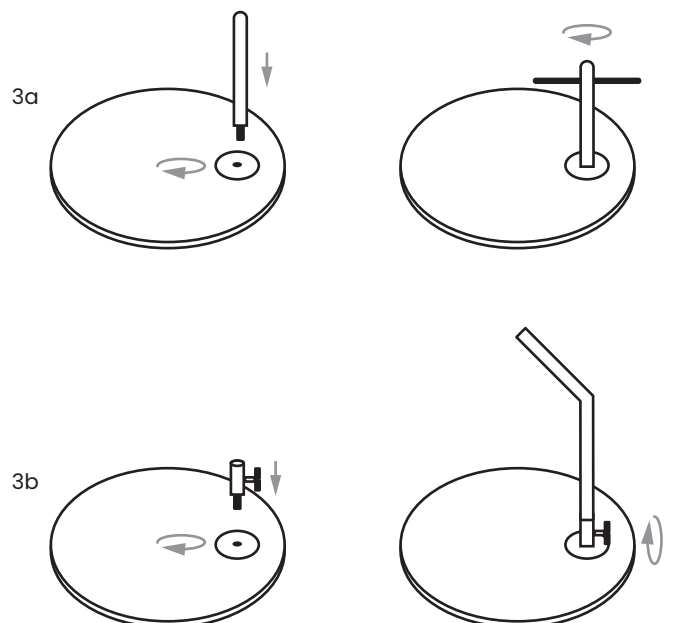
Use a box cutter / scissors to cut the straps, box and protective foam bags.

ATTENTION! Don't cut too deep to avoid damage on any of the product components. Take all the parts out of the box one by one and place them on a soft surface.

STEP 3: Install the base on the floor

3a Screw the foot pin clockwise into the base plate. Make sure it's tight.

3b Screw the calf pin connector clockwise into the base and tighten well. Please install the calf pin in the connector with top of calf pin in the centre of the base. Place the calf pin in the connector and tighten.



continues on the other side →

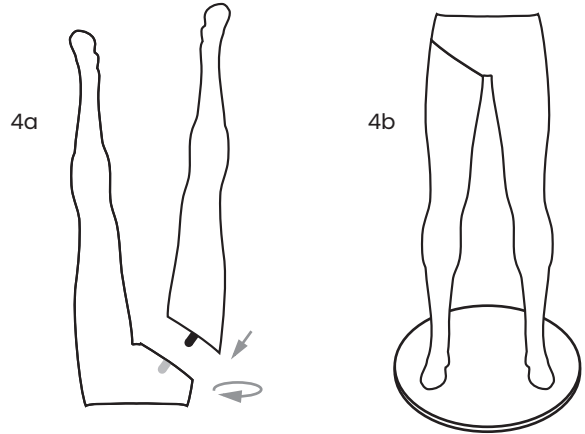
← starts on the other side

STEP 4: Install the legs

4a Place the lower body part feet up on a soft surface, now you can easily connect the separate leg onto the hip part by rotating it a quarter turn.

Tip: This is the perfect position to dress trousers and put shoes on.

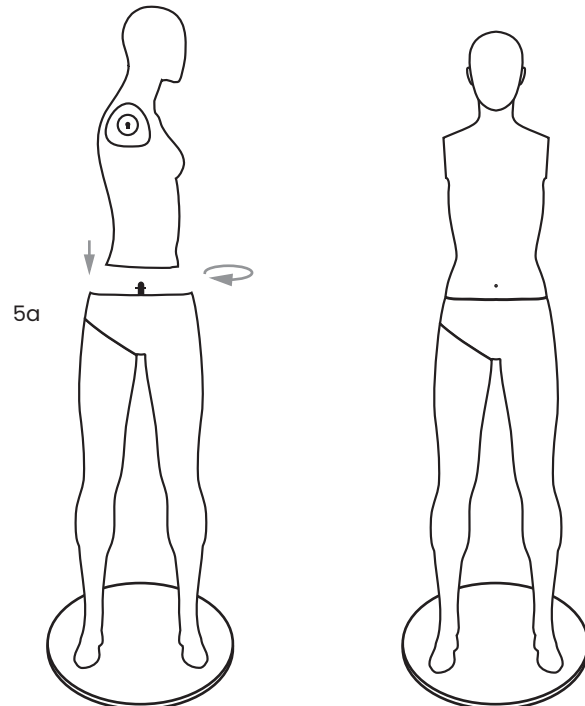
4b Position the legs on the base either with foot pin or calf pin. If you are installing the calf pin, make sure to tighten the wing screw in the back of leg. Ensure that the base is stable and on a flat surface to avoid any stability problems.



STEP 5: Install the torso

5a Place the torso on the hip part, slightly twisted and rotate the torso into its final position.

Tip: This is a good time to dress the torso.



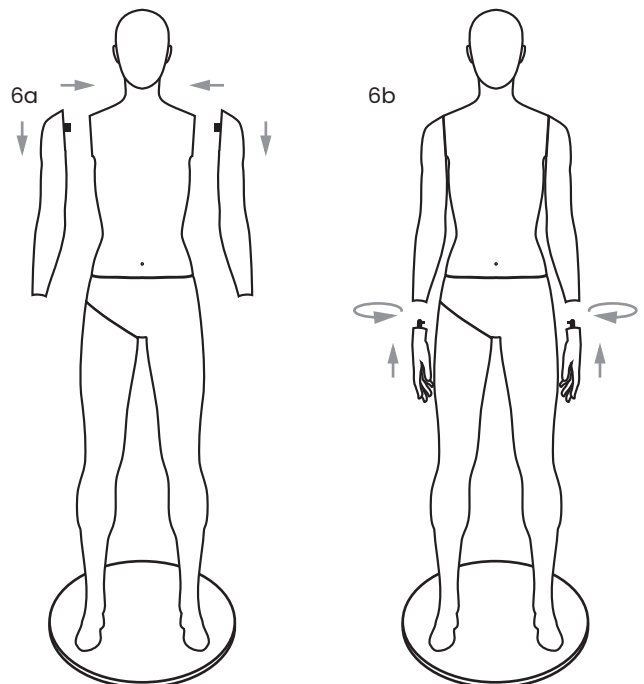
STEP 6: Install arms & hands

6a Connect the arms onto the torso. Once the arms are connected, they can be rotated front and back to find that perfect position.

Tip: If the arm should not go down to its locked position simply try to rotate the arm front/back until the arm falls into his lock position.

6b Install now the hands entering the pin and rotate to its final position.

Tip: Only connect the hands once the mannequin is fully dressed.



HANDLING & CARE GUIDELINES:

We recommend to (dis)assemble the mannequin on a soft and flat surface to avoid any damage.

Please always remove any jewellery before handling a mannequin to avoid scratches. We recommend using the provided gloves to avoid marks and stains.

While dressing, one often inserts the arms through the neck opening of the garment. Please ensure that the hook is opposite from the chest and rotate the arm only when the position of the hook is in front of the insert in the body. This way you avoid damaging the paint on the mannequin with the hook.

In order to clean the mannequin, please use a slightly moistened cloth with detergent that has been diluted with water. Minor stains can be removed with an eraser.